



black line studio
a design company

8701 WESTWIND LANE
LITTLETON, COLORADO 80126

P 720.344.5565
F 303.730.6803
www.theblacklinestudio.com

COPYRIGHT 2012 - THE BLACKLINE STUDIO
ALL RIGHTS RESERVED. REPRODUCTION OR TRANSLATION OF
ANY PART OF THIS WORK WITHOUT THE WRITTEN PERMISSION
OF THE BLACKLINE STUDIO IS UNLAWFUL AND SUBJECT TO
CRIMINAL PROSECUTION.



1 LOWER FLOOR PLAN
Scale: 3/16" = 1'-0"

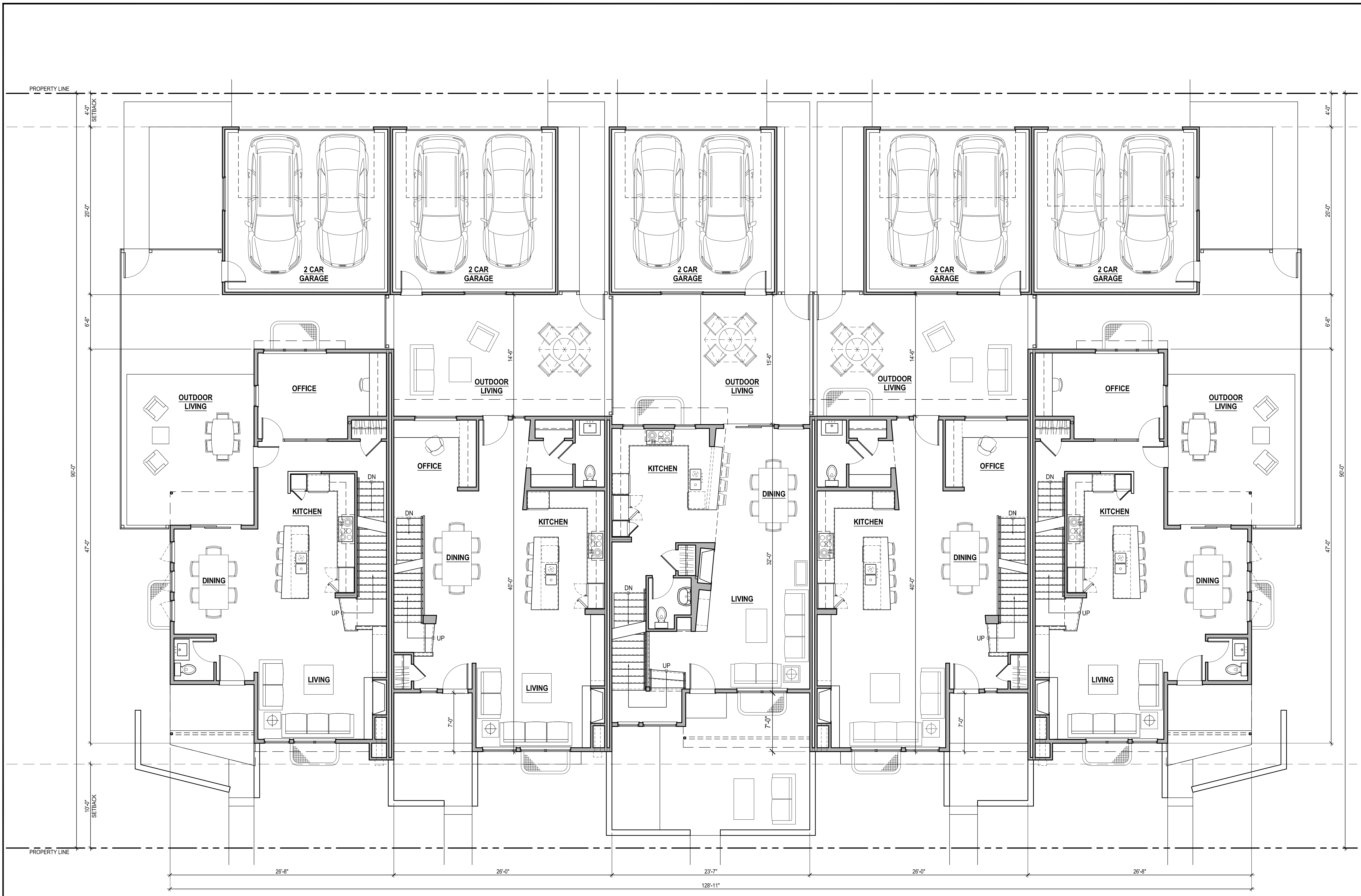
PRELIMINARY - NOT FOR CONSTRUCTION

THE EDGE AT STAPLETON - NORTH
5 UNIT BUILDING
DENVER, COLORADO

REV	DATE	ISSUED FOR:
-	09/12/12	DESIGN DEVELOPMENT

DRAWING TITLE
LOWER FLOOR PLAN

A-201



1 MAIN FLOOR PLAN
Scale: 3/16" = 1'-0"

UNIT 'C' FLOOR AREA
MAIN FLOOR = 942 S.F.
UPPER FLOOR = 946 S.F.
TOTAL AREA = 1,888 S.F.

UNIT 'B' FLOOR AREA
MAIN FLOOR = 975 S.F.
UPPER FLOOR = 935 S.F.
TOTAL AREA = 1,910 S.F.

UNIT 'A' FLOOR AREA
MAIN FLOOR = 804 S.F.
UPPER FLOOR = 730 S.F.
TOTAL AREA = 1,534 S.F.

UNIT 'B' FLOOR AREA
MAIN FLOOR = 975 S.F.
UPPER FLOOR = 935 S.F.
TOTAL AREA = 1,910 S.F.

UNIT 'C' FLOOR AREA
MAIN FLOOR = 942 S.F.
UPPER FLOOR = 946 S.F.
TOTAL AREA = 1,888 S.F.

PRELIMINARY - NOT FOR CONSTRUCTION

THE EDGE AT STAPLETON - NORTH
5 UNIT BUILDING
DENVER, COLORADO

REV	DATE	ISSUED FOR:
-	09/12/12	DESIGN DEVELOPMENT

DRAWING TITLE
MAIN FLOOR PLAN

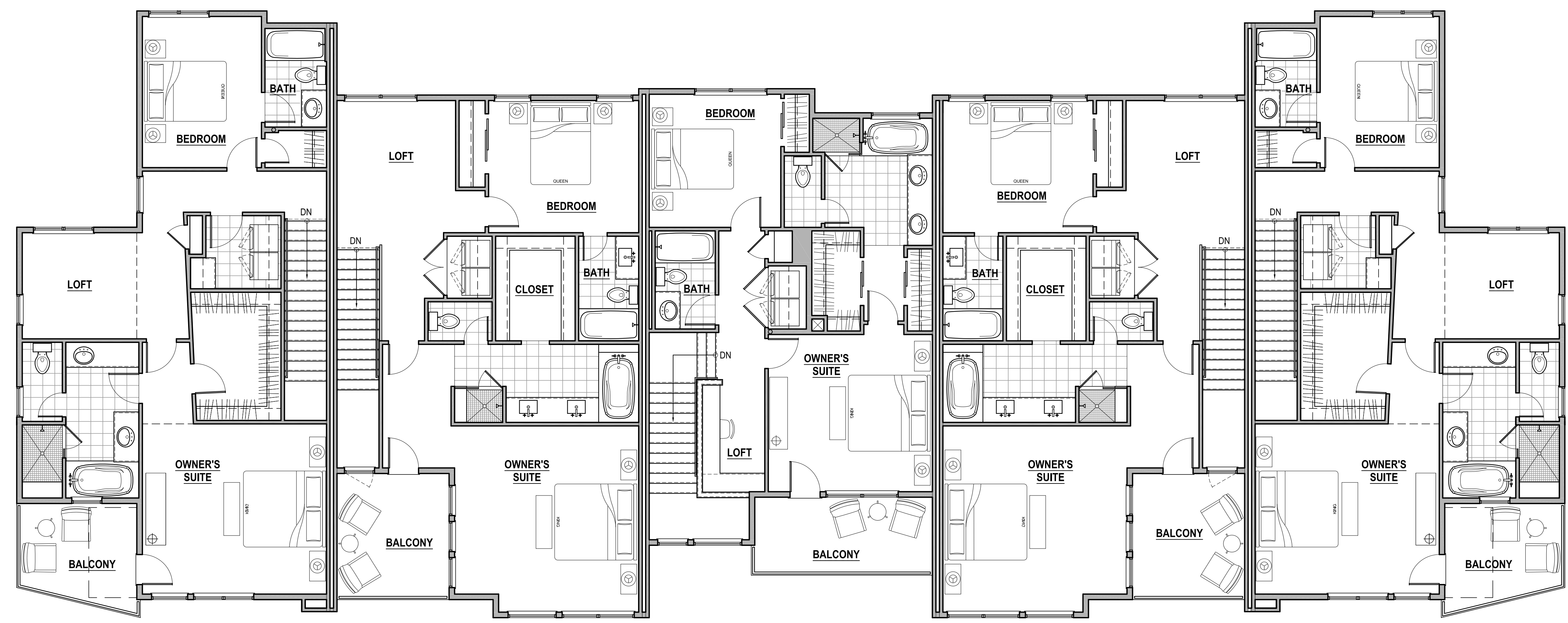
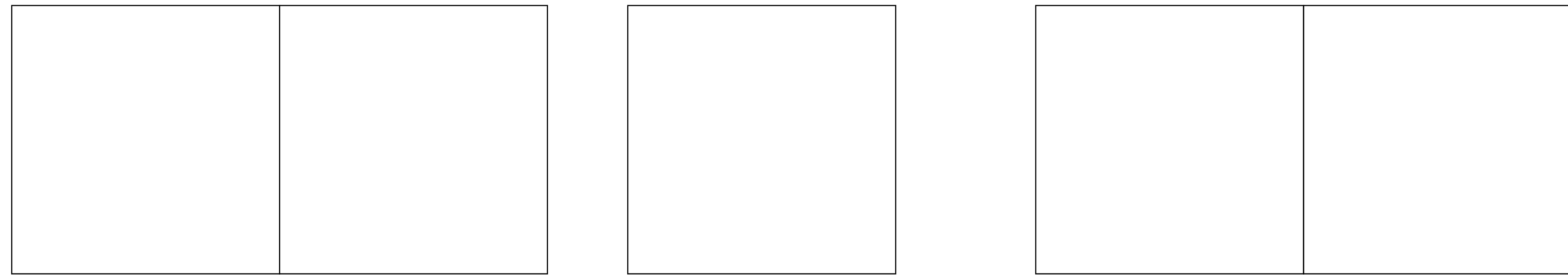


black line studio
a design company

8701 WESTWIND LANE
LITTLETON, COLORADO 80126

P 720.344.5565
F 303.730.6903
www.theblacklinestudio.com

COPYRIGHT 2012 - THE BLACKLINE STUDIO
ALL RIGHTS RESERVED. REPRODUCTION OR TRANSLATION OF
ANY PART OF THIS WORK WITHOUT THE WRITTEN PERMISSION
OF THE BLACKLINE STUDIO IS UNLAWFUL AND SUBJECT TO
CRIMINAL PROSECUTION.



1 UPPER FLOOR PLAN
Scale: 3/16" = 1'-0"

PRELIMINARY - NOT FOR CONSTRUCTION

THE EDGE AT STAPLETON - NORTH
5 UNIT BUILDING
DENVER, COLORADO

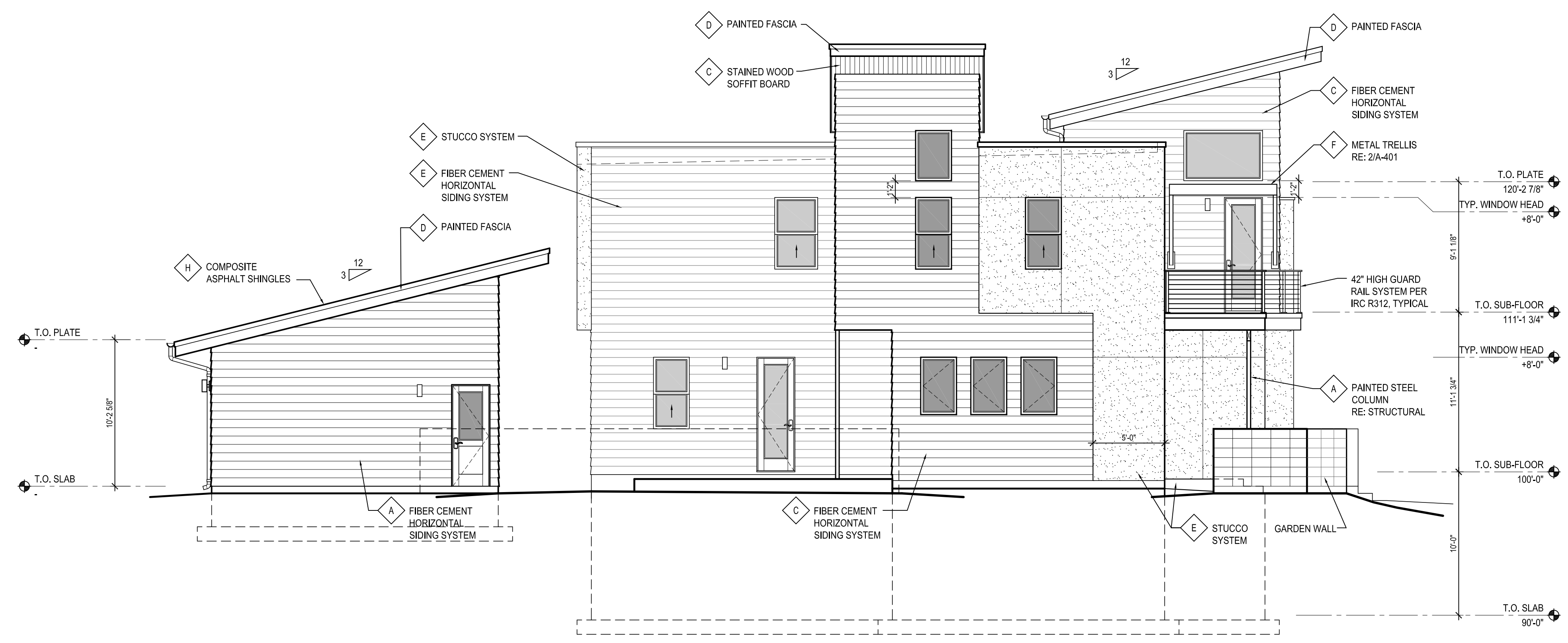
REV	DATE	ISSUED FOR:
-	09/12/12	DESIGN DEVELOPMENT

DRAWING TITLE
UPPER FLOOR PLAN

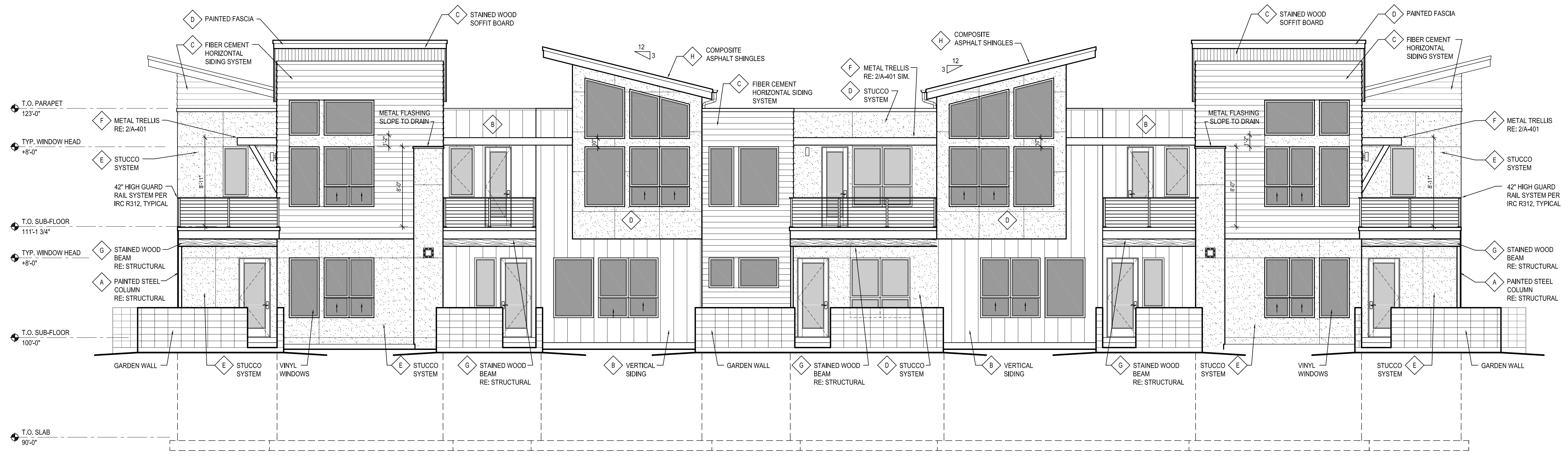
A-203

MATERIAL FINISH LEGEND

- NOTE:
1. ALL COLORS BY KVAL PAINTS UNLESS NOTED OTHERWISE
2. ALL EXPOSED FOUNDATION WALLS ARE TO BE PAINTED TO MATCH ADJACENT MATERIAL COLOR.
3. 3 COAT STUCCO SYSTEM PER SEC. R703.6
- ◆ A 8746N TIMBER TRAIL (HORIZONTAL SIDING)
 - ◆ B 8746N TIMBER TRAIL (VERTICAL SIDING)
 - ◆ C CERTANTEED CEDAR STAIN
 - ◆ D 8213M PLANTATION BEIGE
 - ◆ E 8526A DARK COLOSSUS
 - ◆ F AC115N TOMATILLO
 - ◆ G MAHOGONAY STAIN
 - ◆ H 'GA' ASPHALT 30 YEAR - BARKWOOD COLOR



C UNIT
2 SIDE ELEVATION
Scale: 3/16" = 1'-0"



C UNIT B UNIT A UNIT B UNIT C UNIT
1 FRONT ELEVATION
Scale: 3/16" = 1'-0"

PRELIMINARY - NOT FOR CONSTRUCTION

THE EDGE AT STAPLETON - NORTH
5 UNIT BUILDING
DENVER, COLORADO

REV	DATE	ISSUED FOR:
-	09/12/12	DESIGN DEVELOPMENT

DRAWING TITLE
EXTERIOR ELEVATIONS

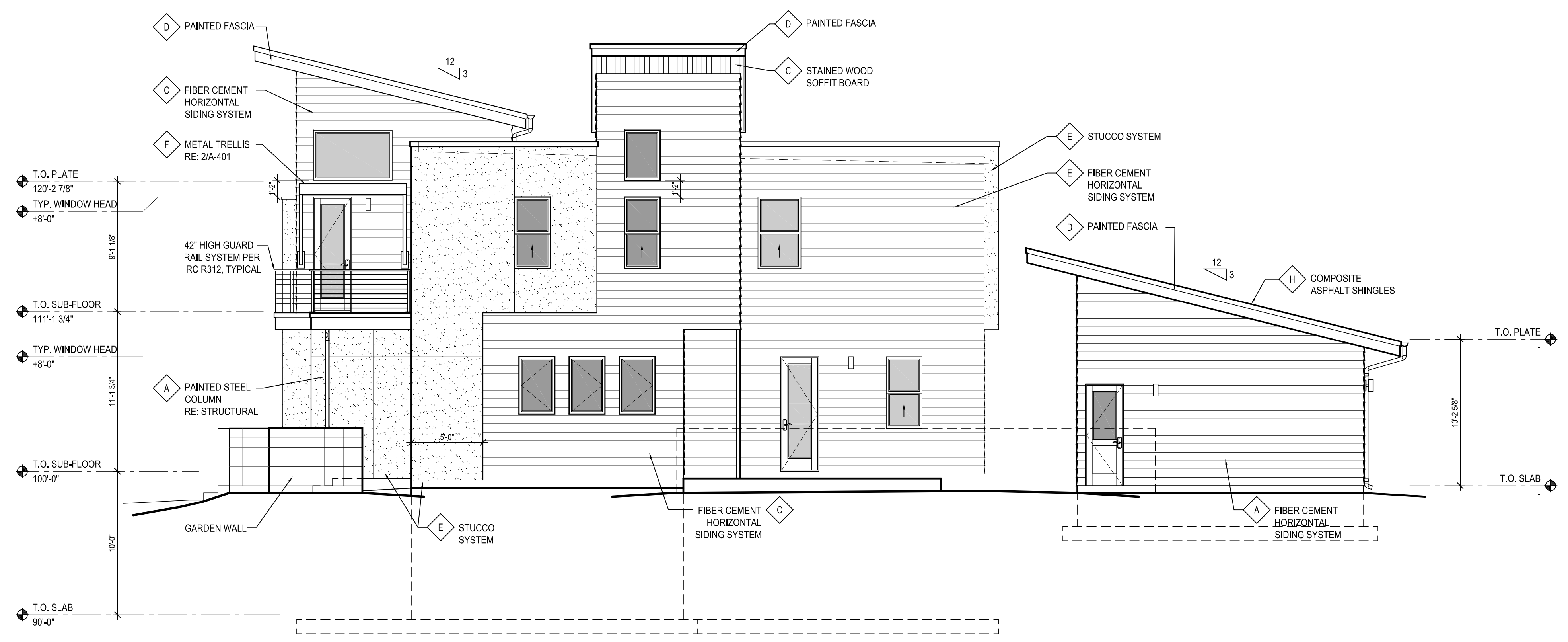
A-501

MATERIAL FINISH LEGEND

NOTE:

1. ALL COLORS BY KVAL PAINTS UNLESS NOTED OTHERWISE
2. ALL EXPOSED FOUNDATION WALLS ARE TO BE PAINTED TO MATCH ADJACENT MATERIAL COLOR.
3. 3 COAT STUCCO SYSTEM PER SEC. R703.6

- A 8746N TIMBER TRAIL (HORIZONTAL SIDING)
- B 8746N TIMBER TRAIL (VERTICAL SIDING)
- C CERTAINEED CEDAR STAIN
- D 8213M PLANTATION BEIGE
- E 8526A DARK COLOSSUS
- F AC115N TOMATILLO
- G MAHOGONAY STAIN
- H 'GAF' ASPHALT 30 YEAR - BARKWOOD COLOR



2 SIDE ELEVATION
Scale: 3/16" = 1'-0"



1 REAR ELEVATION
Scale: 3/16" = 1'-0"

PRELIMINARY - NOT FOR CONSTRUCTION

THE EDGE AT STAPLETON - NORTH
5 UNIT BUILDING

DENVER, COLORADO

REV	DATE	ISSUED FOR:
-	09/12/12	DESIGN DEVELOPMENT

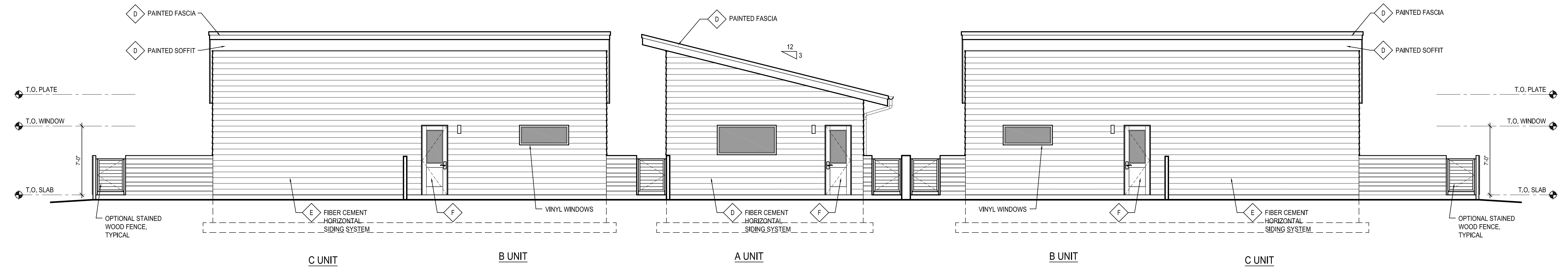
DRAWING TITLE
EXTERIOR ELEVATIONS

A-502

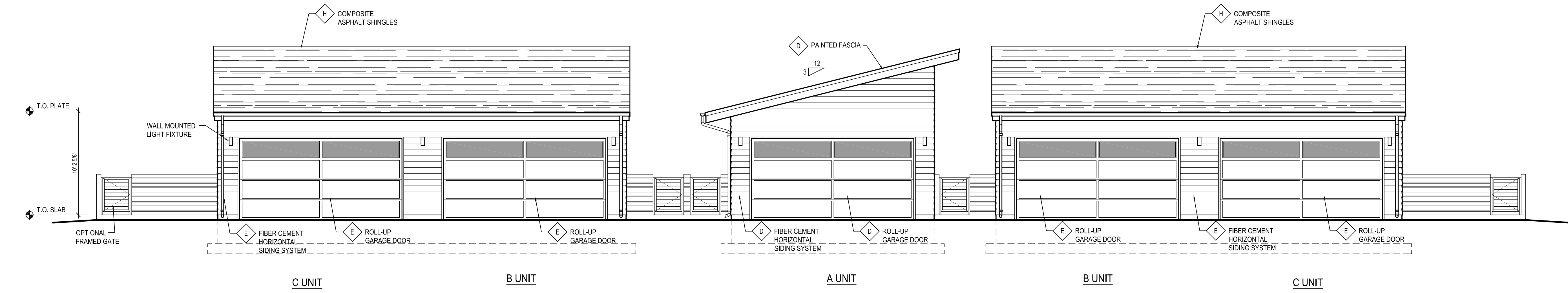
MATERIAL FINISH LEGEND

NOTE:
1. ALL COLORS BY KVAL PAINTS UNLESS NOTED OTHERWISE
2. ALL EXPOSED FOUNDATION WALLS ARE TO BE PAINTED TO MATCH ADJACENT MATERIAL COLOR.
3. 3 COAT STUCCO SYSTEM PER SEC. R703.6

- A 8746N TIMBER TRAIL (HORIZONTAL SIDING)
- B 8746N TIMBER TRAIL (VERTICAL SIDING)
- C CERTAINTED CEDAR STAIN
- D 8213M PLANTATION BEIGE
- E 8526A DARK COLOSSUS
- F AC115N TOMATILLO
- G MAHOGONAY STAIN
- H 'GAF' ASPHALT 30 YEAR - BARKWOOD COLOR



2 REAR GARAGE ELEVATIONS
Scale: 3/16" = 1'-0"



1 GARAGE ELEVATIONS
Scale: 3/16" = 1'-0"

PRELIMINARY - NOT FOR CONSTRUCTION

THE EDGE AT STAPLETON - NORTH
5 UNIT BUILDING
DENVER, COLORADO

REV	DATE	ISSUED FOR:
-	09/12/12	DESIGN DEVELOPMENT

DRAWING TITLE
EXTERIOR GARAGE ELEVATIONS

A-503